

LEELANAU CONSERVATION DISTRICT

2024 NATIVE PLANT SALE ORDER FORM

Name _____ Date _____
 Address _____ Email _____
 City _____ State _____ Zip _____ Phone _____
 Credit Card # _____ Exp. _____ V-code _____ Check # _____ Cash _____

Order by Friday, May 17th

Pick-up on Friday, May 31st - 1 pm to 5 pm at:

The Bear Den, 5046 S. W. Bay Shore Dr.

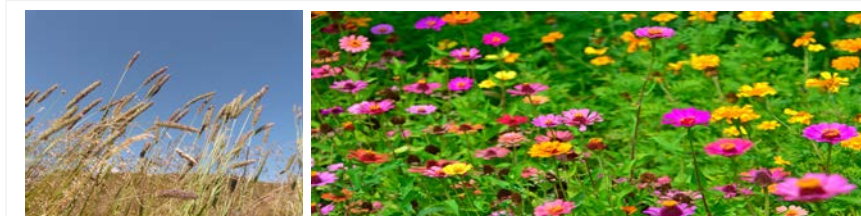
Kits – \$100.00 per 38 Plug Flat (planting design plans included)
A Variety of Quart Potted Plants will be Available the day of the sale !!

** See the back of the order form for a list of plants in each Garden Kit **

Garden Kits	Description	Quantity	Cost
<i>Butterfly</i>	A selection of host plants for several butterfly species found in Northern Michigan, including American Painted Lady, Dusky Wings, Dusted Skipper, Black Swallowtail, Karner Blue, Monarch and Primrose Moth. Also featuring important nectar plants for adults for early Summer through Fall.		
<i>Grassland</i>	Native Michigan warm and cool season prairie grasses for season-long interest and a low maintenance native planting.		
<i>Shoreline</i>	Designed for planting near the water's edge along Northern Michigan lakes and streams. A selection of native shoreline plants to provide erosion control, critical pollinator habitat as well as color and interest from Spring through Fall.		
<i>Tall Prairie</i>	A mix of taller native bunchgrasses and wildflowers to provide height, color and robust habitat throughout the growing season.		
<i>Pollinator</i>	Michigan wildflower species selected to support a wide array of pollinators (wild bees, wasps, butterflies, moths and skippers) from Spring through Fall.		
<i>Rain Garden</i>	Tailored for planting in designed Rain Gardens, these species are able to tolerate flooding during spring runoff or rain events, as well as drier conditions, all while providing wildlife habitat and a vibrant mix of blooms.		
<i>Semi-Shade</i>	Perfect for planting in woodland settings featuring a mix of light sun and shade, featuring species to provide color and attract pollinators in Spring, Summer and Fall.		
<i>Monarch</i>	A mix of several Michigan native milkweeds for Monarch caterpillars, as well as vital nectar plants for adult butterflies from early Summer through Fall migration.		

Leelanau Conservation District
8527 E. Government Center Dr., Ste.
Suttons Bay, MI 49682
Ph: 231-256-9783 E-mail: klong@leelanau.gov

Subtotal	
6% Sales Tax	
TOTAL ENCLOSED	



Butterfly – *Little Bluestem, Common Milkweed, Butterfly Weed, Wild Lupine, Golden Alexanders, Sweet Everlasting, Rosinweed, Northern Blazing Star, Bergamot, Yarrow, Sand Coreopsis, Evening Primrose, Smooth Blue Aster, Stiff Goldenrod*

Grassland – *Big Bluestem, Indian Grass, Switchgrass, Little Bluestem, Canada Wild Rye, Side Oats Grama, Brown Fox, Sedge, June Grass, Purple Love Grass, Prairie Drop Seed, Purpletop Grass*

Shoreline – *Meadowsweet, Blue Vervain, Swamp Milkweed, Cardinal Flower, Great Blue Lobelia, Wild Blue Iris Boneset, Joe Pye Weed, Fireweed, Dark Green Bullrush, Purple Meadow Rue, Swamp Aster, Bog Goldenrod.*

Tall Prairie – *Big Bluestem, Indian Grass, Foxglove Beardtongue, Tall Coreopsis, Rosinweed, Prairie Dock, Ironweed, Culver's Root, Greyheaded Cone Flower, Hoary Vervain, Pale Purple Coneflower, Smooth Blue Aster, Showy Goldenrod*

Pollinator – *New Jersey Tea, Wild Columbine, Hairy Beardtongue, False Boneset, Mountain Mint, Showy Goldenrod, Horsemint, Northern Blazing Star, Tall Coreopsis, Rattlesnake Master, Sky blue Aster, Frost Aster, Showy Goldenrod, Grass Leaved Goldenrod*

Rain Garden – *Brown Fox Sedge, Swamp Milkweed, Mountain Mint, Seezweed, Ironweed, Marsh Blazing Star, Black Eyed Susan, Wild Blue Iris, Early (Oxeye) Sunflower, Purple Coneflower, Yellow Avena, New England Aster, Riddell's Goldenrod*

Semi-Shade – *Bottlebrush Grass, Foxglove Beardtongue, Tall Bellflower, Wild Columbine, Bergamot, Golden Alexanders, Hairy Woodmint, Black Eyed Susan, Spiderwort, Early Sunflower, Thimbleweed, Big Leaf Aster, Zigzag Goldenrod.*

Monarch – *Big Bluestem, Butterfly Weed, Common Milkweed, Whorled Milkweed, Bergamot, Pale Purple Coneflower, Hoary Vervain, Western Sunflower, Rough Blazing Star, Yarrow, Showy Coneflower, Prairie Coreopsis, New England Aster, Stiff Goldenrod*

Quart pots available the day of the Sale: \$8.00 each

Wildflowers:

Bergamot, Black Eyed Susan, Blue Vervain, Boneset, Butterfly Weed, Cardinal Flower, Compass Plant, Culvers Root, Foxglove Beardtongue, Great Blue Lobelia, Harebell, Hoary Vervain, Spotted Joe-Pye Weed, Longleaf Bluets, March Blazing Star, Mountain Mint, New England Aster, Northern Blazing Star, Pale Purple Coneflower, Purple Coneflower, Prairie Coreopsis, Rattlesnake Master, Showy Goldenrod, Sky Blue Aster, Swamp Milkweed, Sweet Black Eyed Susan, Wild Columbine, Wild Lupine,

Grasses & Sedges:

Big Blue Stem, Brown Fox Sedge, Indian Grass, Little Bluestem, Pennsylvania Sedge, Prairie Dropseed